

# S2/2000 Compact Series

Internal/External Air Cooled Chillers

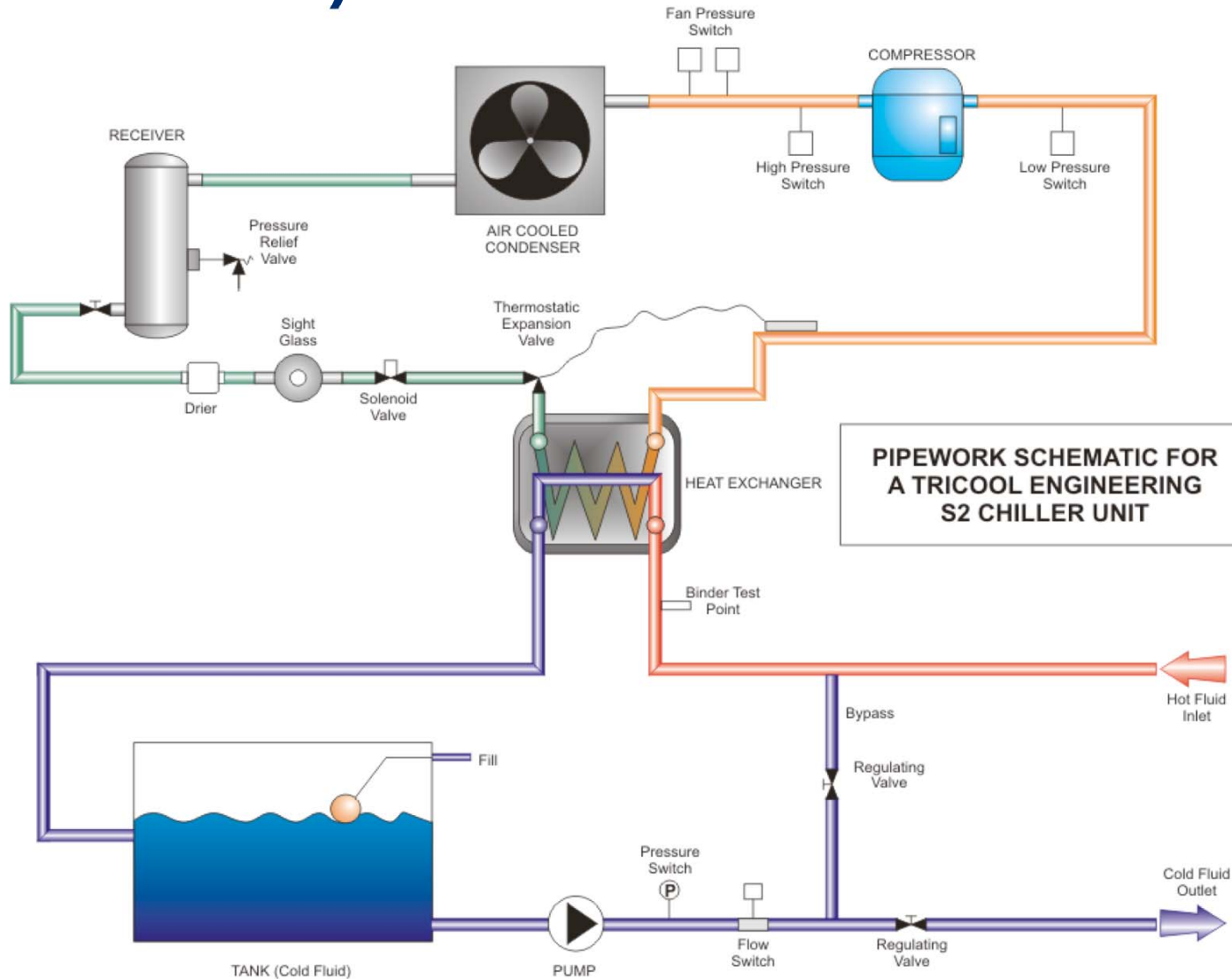
3kW-105kW



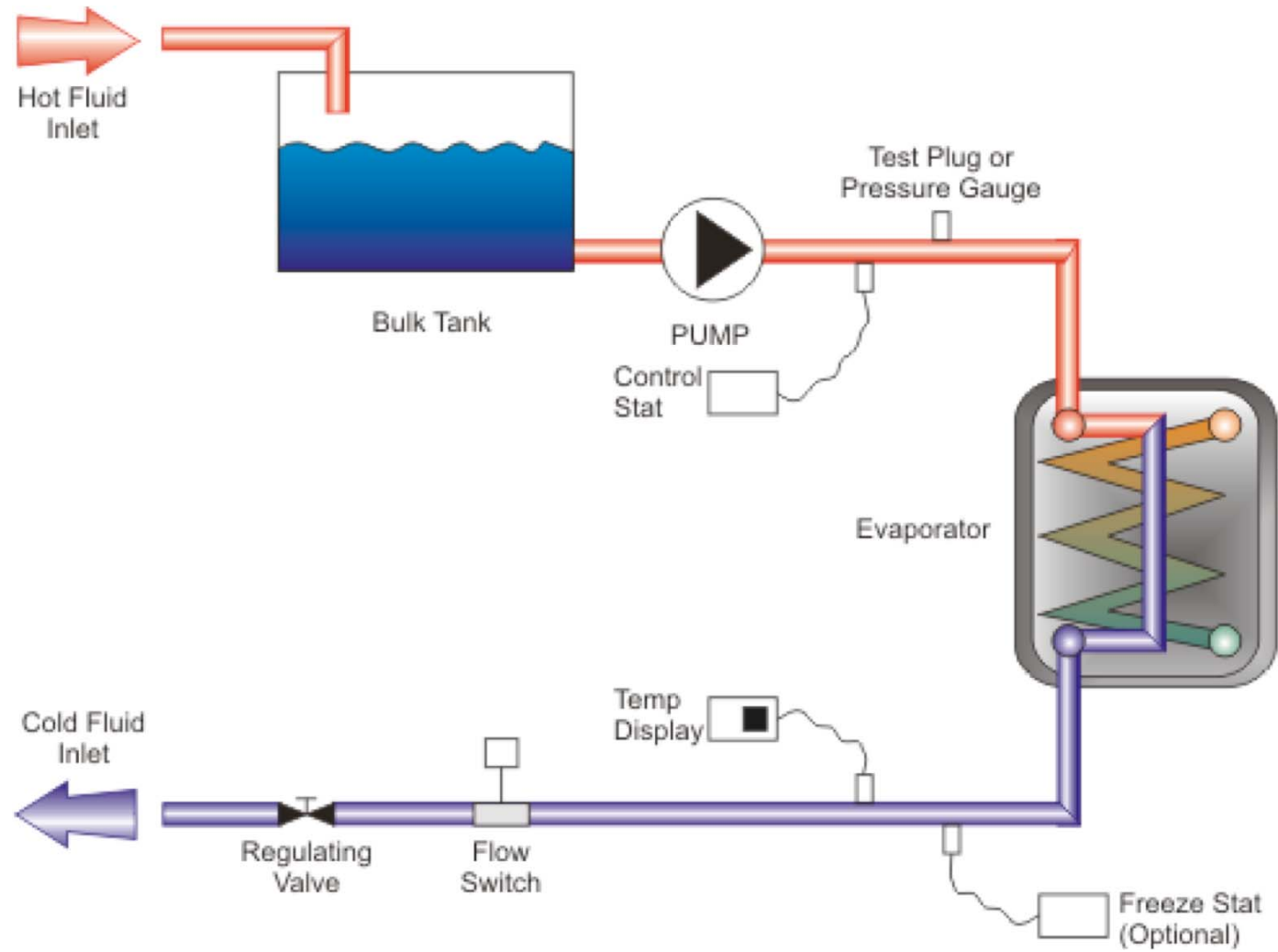
**tricolothermal**

TECHNOLOGY

# S2/ Standard Circuit



# S2/ Minac Circuit



# Features

- All non – ferrous wetted parts
- Robust framework
- Fitted with castors for mobility
- Flexible build options to suit various applications
- High quality components used throughout
- Dual independent circuits on larger models
- Pressure gauge & manual by-pass as standard
- Condenser air intake from both sides
- Extensive list of optional extras available
- Manufactured in the UK to ISO 9001/2000 standards
- and carrying CE marking
- High volume of stock held for spares



# Compressor



- Fully hermetic scroll type
- DWM Copeland manufacture
- Renowned energy efficiency
- Complete with suction & discharge valves



# Pump

- All stainless steel wetted parts
- Lowara/Goulds manufacture
- End suction centrifugal type
- Standard pressure 2.5 bar
- High flow / pressure options
- selected for ethylene glycol
- Hard faced seal for use with
- propylene glycol
- Replacement and spares readily
- available from stock



**tricoolthermal**

TECHNOLOGY

# Evaporator

- Stainless steel, copper braze construction
- Swep Manufacture
- Efficient and compact design
- Installed on process return providing cold tank
- Can be installed after tank on
- Systems with inrush of hot return water



# Tank

- Manufactured in 304 stainless steel
- 13mm armaflex sheet insulated sides & base
- Fitted with manual fill spout
- Loose fitting lid for easy access and cleaning
- Can be installed as cold buffer or hot return tank



# Condensator

- Copper tube aluminium fins
- Installed horizontally at the top of the framework allowing space for a smaller footprint
- Sierra manufacture (Italy)
- Options for vinyl coating, electro - tinned or copper - copper



# Condenser Fan

- Ziehl Abbeg manufacture
- Low noise options available
- flexibility to select optimum performance
- Spares available from stock



# Control Box

- Electrical control box suitable for operation externally
- Use of Siemens components as standard
- Front panel featuring diagnostic indication & mains isolator
- Eliwell electronic temperature controller
- Optional IP rated boxes



**tricoolthermal**

TECHNOLOGY

# Insulation

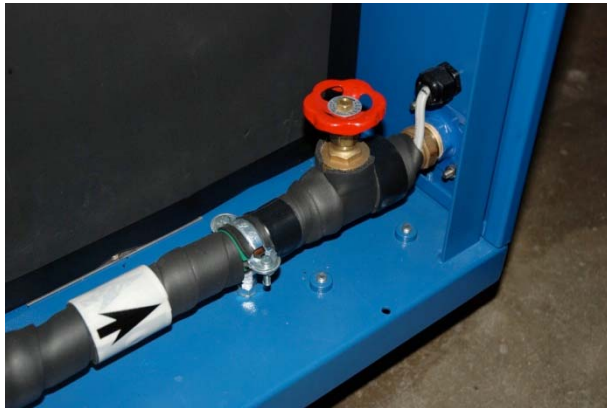
High usage of insulating materials on refrigeration, chilled fluid pipework and associated components providing thermal efficiency and reducing risk of condensation forming



# Optional Extras

- Water cooled version
- Stainless steel frame & panels
- Low noise options
- Close control (Hot - Gas)
- High flow & pressure
- Remote control & indication features
- Auto make - up facility
- IP rated electrical control box
- Trace heating/Frost protection
- All other requirements on request





  
**tricoolthermal**  
TECHNOLOGY



**tricoolthermal**

TECHNOLOGY