



# tricoolthermal

HEATING & COOLING

Eco-T 410-650



## ABOUT THE UNIT

The Tricool Thermal 410 - 650 Eco-T range of chillers are designed, manufactured and tested in the UK supported and controlled by ISO 9001. The units feature advanced microprocessors, a 3 bar pump with different pressures available, scroll compressors, supervisory systems and non ferrous internal parts as standard.

The refrigerant R410A and the latest scroll compressors allow the ECO-T to save on energy consumption and increase efficiency. With 30 years experience in the cooling market, Tricool have designed and manufactured the ECO-T specifically for a diverse range of industries, unlike other chiller units.

## Flexibility

The Eco-T has water inlet limits of -7°C to 25°C and ambient limits of up to 43°C. This is to ensure that the unit is suited to the majority of industrial applications as standard.

Features	Benefits
Open Circuit	Precise and consistent water temperatures
Scroll Compressors	Low energy consumption with fewer moving parts
Heat Exchangers	Non ferrous & stainless steel - helping maximise on efficiency
Pumps and Large Tank	3 bar pump and tank as standard offering a complete packaged solution
Advanced Microprocessor	Continuously monitoring performance; ensuring fail safe operation at all times
Condenser Sections	Optimising Efficiency
Multiple Components	Compressor rotations and uploading functions
R410A Refrigerant	Long-term trouble free operation, saving on energy consumption

## Technical Specifications

Cooling Capacity	410	480	565	650
20/15 in a 25°C Ambient	142.2	168.6	193.8	222
12/7 in a 32°C Ambient	101.4	123.8	140.1	160.4
20/15 in a 40°C Ambient	115.6	139.6	157.3	181
12/7 in a 40°C Ambient	91	108.6	124.7	143.4

Absorbed Power kW				
20/15 in a 25°C Ambient	26.9	36.5	41.65	46
12/7 in a 32°C Ambient	28.4	37.5	43.55	47.8
20/15 in a 40°C Ambient	35.7	46.6	54.4	60
12/7 in a 40°C Ambient	33	44.2	50.5	55.6

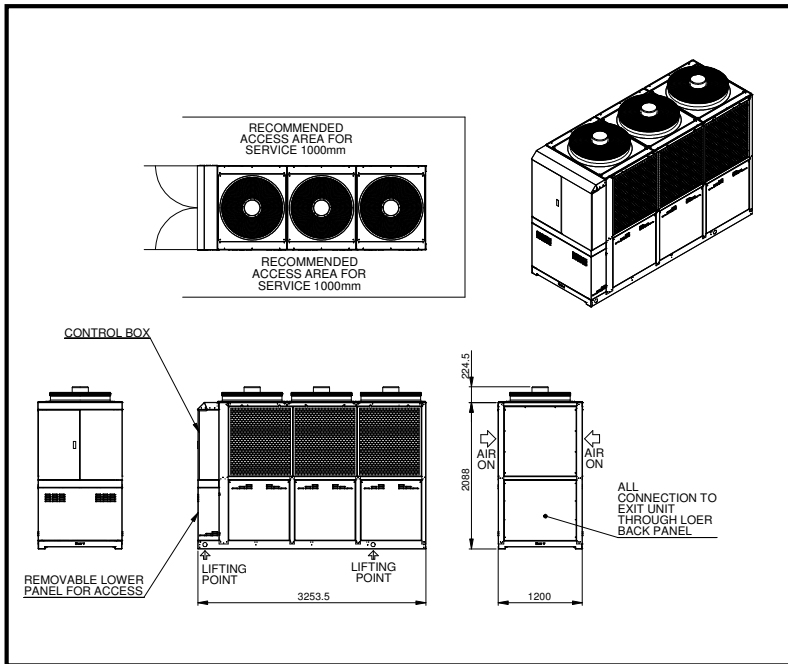
Power Supply V/Ph/Hz				
Standard configuration				
Standard compressors/circuit	4/2	4/2	4/2	4/2

Axial Fan				
No of fans	2	2	2	3
Nominal Power (each) kW	2.6	2.6	1.9	1.9
Total air flow m <sup>3</sup> /h	37600	37600	41000	52600
Noise level (sound power) dB (A)	91	91	94	94

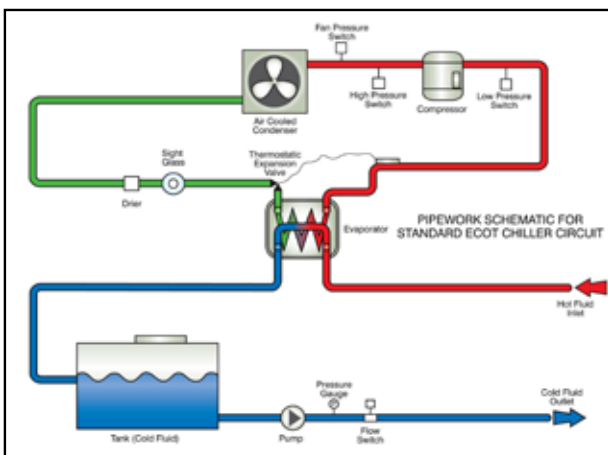
Standard Pump				
Flow at 5K Split (nom/max) m <sup>3</sup> /hr	24.5/48	29.0/48	33.3/85	38.2/85
Available Pressure (nom/max) bar	3.3/1.9	3.0/1.9	3.1/1.5	3.0/1.5
Nominal Power kW	4	4	5.5	5.5
HP Pump Option				
Flow at 5K split m <sup>3</sup> /hr	24.50	29.0/50	33.3/87	38.2/87
Available Pressure bar	5.2/3.2	4.9/3.2	5.7/2.6	5.5/2.6
Nominal Power kW	7.5	7.5	11	11

Physical Data				
Width mm	1206	1206	1206	1206
Length mm	3252	3252	3252	3252
Height mm	2385	2385	2385	2385
Tank volume	700	700	700	700
Connections	21/2"	21/2"	3"	3"

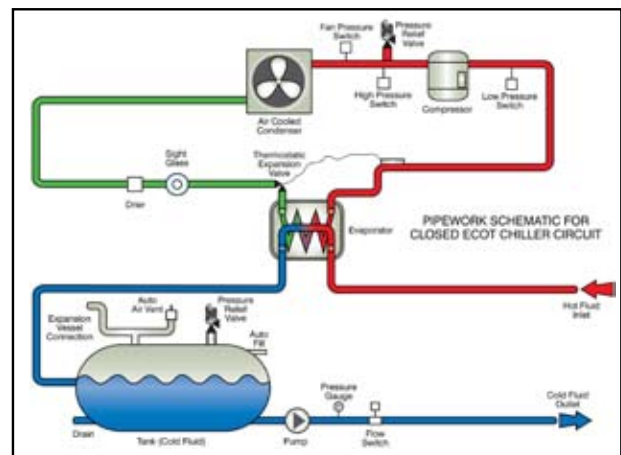
# GA Drawings



Standard Circuit



Optional Closed Circuit



Head Office South  
ICS House, Stephenson Road, Calmore Industrial Estate, Totton,  
SO4O 3RY T (+44) 23 8052 7300 F (+44) 23 8042 8366

Midlands  
Birmingham Science Park, Aston Faraday Wharf, Holt Street,  
Birmingham B7 4BB T (+44) 12 1326 7771 F (+44) 12 1327 4114

North  
Floor 3, Caspian House, East Parade, Little Germany, Bradford BD1 5EP  
T (+44) 12 7474 0877 F (+44) 12 7439 1708

Scotland  
Unit 5, 53/58 South Avenue, Blantyre Industrial Estate, Blantyre G72 OXB  
T (+44) 1698 7233 308 F (+44) 1698 723 309

Ireland  
Unit 2, Kells Enterprise Centre, Cavan Road Kells, County Meath Ireland  
T (+353) 46 925 2934 F (+353) 46 925 2936

