



# tricoothermal

HEATING & COOLING

T90

Water up to 95 °C



## ABOUT THE UNIT

Tricool Thermal's T90 unit operates from 18 - 96kW offering temperatures up to 95 °C.

The unit features a stainless steel heat exchanger, diagnostic controller, castors, solid state relays, and direct acting self cleaning solenoid valves.

In addition to this the units feature low volume individual tubular heater tanks, which reduce the liquid volume in circulation resulting in a reduced power input required for heating.

## FEATURES

- **LOW VOLUME TANK**

Low volume individual tubular heater tanks, which reduce the liquid volume in circulation, resulting in a reduced power input required for heating

- **DIAGNOSTIC CONTROLLER**

Helps maintenance by showing knowledge of any faults that occur

- **NON FERROUS INTERNAL PARTS**

Keeps system clean no rust from internal materials of unit

- **CASTORS**

Enables easy manoeuvrability

- **DIRECT ACTING SELF CLEANING SOLENOID VALVES**

Low maintenance due to minimal cleaning required (no diaphragm)

- **STAINLESS STEEL HEAT EXCHANGER**

More efficient with large gaps between plates which reduces the risk of blocking due to contamination

- **SOLID STATE RELAY**

Energy savings due to pulsing every 0.3 seconds (contactors generally every 16 seconds) Increased accuracy  
No wear and tear due to no moving parts

PID twin digital readout diagnostic controller

Self cleaning solenoid valves

Non ferrous parts

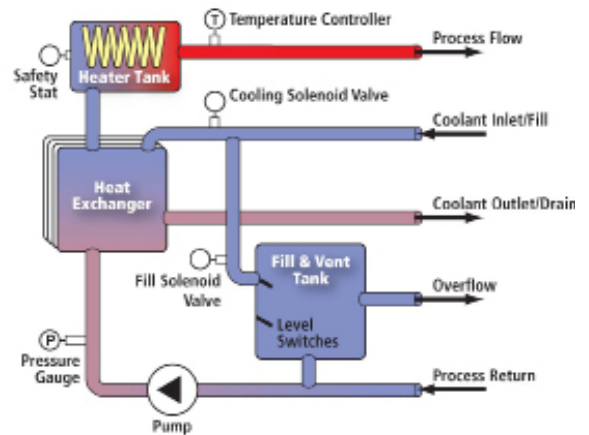
Low watts density heating elements

Solid state relays



#### OPTIONS

- Switchable remote and local sensing
- IP55 rated electrical specification
- Stainless steel panels
- Controller available with a number of language chips
- Various flow/pressure options
- Increased cooling
- Bespoke machines built to order
- Data logging instrumentation



#### UNIT SPECIFICATIONS

Model	Heating kW	Standard kW Cooling	Max Flow/ Pressure LPM/bar	Connections Process	Connections Cooling	FLA Amps	Dimensions mm
T90 - 18	18	33	70/4.0	1"	3/4"	32	750 L x 360 W x 920 H
T90 - 24	24	33	70/4.0	1"	3/4"	40	750 L x 360 W x 920 H
T90 - 36	36	41	130/3	1 1/4"	1"	55	1000 L x 500 W x 1180 H
T90 - 48	48	41	130/3	1 1/4"	1"	76	1000 L x 500 W x 1180 H
T90 - 54	54	41	130/4	1 1/2"	1"	89	1400 L x 600 W x 1300 H
T90 - 72	72	41	130/4	1 1/2"	1"	106	1400 L x 600 W x 1300 H
T90 - 96	96	70	220/3.2	1 1/2"	1"	150	1400 L x 600 W x 1300 H
Colour	Grey RAL7035						

#### Head Office South

+44 (0) 23 8052 7300  
**London**  
 +44 (0) 208 200 2404  
**Midlands**  
 +44 (0) 121 326 7771

#### North

+44 (0) 1274 740877  
**Scotland**  
 +44 (0) 1698 723308  
**Ireland**  
 +353 (0) 86 38 77990

