

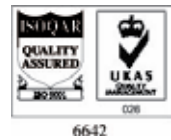


tricolthermal

MANUFACTURING TECHNOLOGY

Thermoregulators

Water up to 95 °C
18kw to 96kw



ABOUT THE UNIT

Tricool Thermal's range of thermoregulators operate from 18 - 96kW offering temperatures up to 95 °C. The range features a stainless steel heat exchanger, diagnostic controller, castors, solid state relays, and direct acting self cleaning solenoid valves.

In addition to this the units feature low volume individual tubular heater tanks, which reduce the liquid volume in circulation resulting in a reduced power input required for heating.

FEATURES

- **LOW VOLUME TANK**
Low volume individual tubular heater tanks, which reduce the liquid volume in circulation, resulting in a reduced power input required for heating
- **DIAGNOSTIC CONTROLLER**
Helps maintenance by showing knowledge of any faults that occur
- **NON FERROUS INTERNAL PARTS**
Keeps system clean no rust from internal materials of unit
- **CASTORS**
Enables easy manoeuvrability
- **DIRECT ACTING SELF CLEANING SOLENOID VALVES**
Low maintenance due to minimal cleaning required (no diaphragm)
- **STAINLESS STEEL HEAT EXCHANGER**
More efficient with large gaps between plates which reduces the risk of blocking due to contamination
- **SOLID STATE RELAY**
Energy savings due to pulsing every 0.3 seconds (contactors generally every 16 seconds)
Increased accuracy
No wear and tear due to no moving parts

PID twin digital readout
Diagnostic controller

Self cleaning solenoid valves

Non ferrous parts

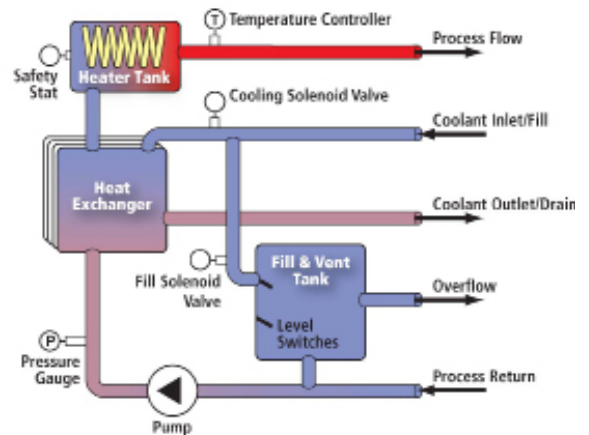
Low watts
density heating elements

Solid state relays



OPTIONS

- Switchable Remote and Local Sensing
- Process Machines Protocol Interface
- IP55 rated electrical specification
- Stainless Steel Panels
- Controller available with a number of language chips
- Various flow/pressure options
- Increased Cooling
- Bespoke machines built to order



UNIT SPECIFICATIONS

Model	Heating kW	Standard kW	Increased kW	Max Flow/Pressure LPM/bar	Connections Process	Connections Cooling	FLA Amps
T5 18	18	33	80	70/4.0	1"	3/4"	32
T5 24	24	33	80	70/4.0	1"	3/4"	40
T5 36	36	41	80	70/4.0	1 1/4"	1"	55
T5 48	48	41	90	130/3	1 1/4"	1"	76
T5 54	54	41	90	130/3	1 1/2"	1"	89
T5 72	72	41	90	130/3	1 1/2"	1"	106
T5 96	96	70	90	220/3	1 1/2"	1"	150

Head office South

+44 (0) 23 8052 7300
London
+44 (0) 208 200 2404
Midlands
+44 (0) 121 326 7771

North

+44 (0) 1274 740877
Scotland
+44 (0) 1698 723308
Ireland
+353 (0) 86 38 77990