



tricoolthermal

MANUFACTURING TECHNOLOGY

Viceroy

Water up to 140°C
(option for up to 160°C)
9kW to 96kw



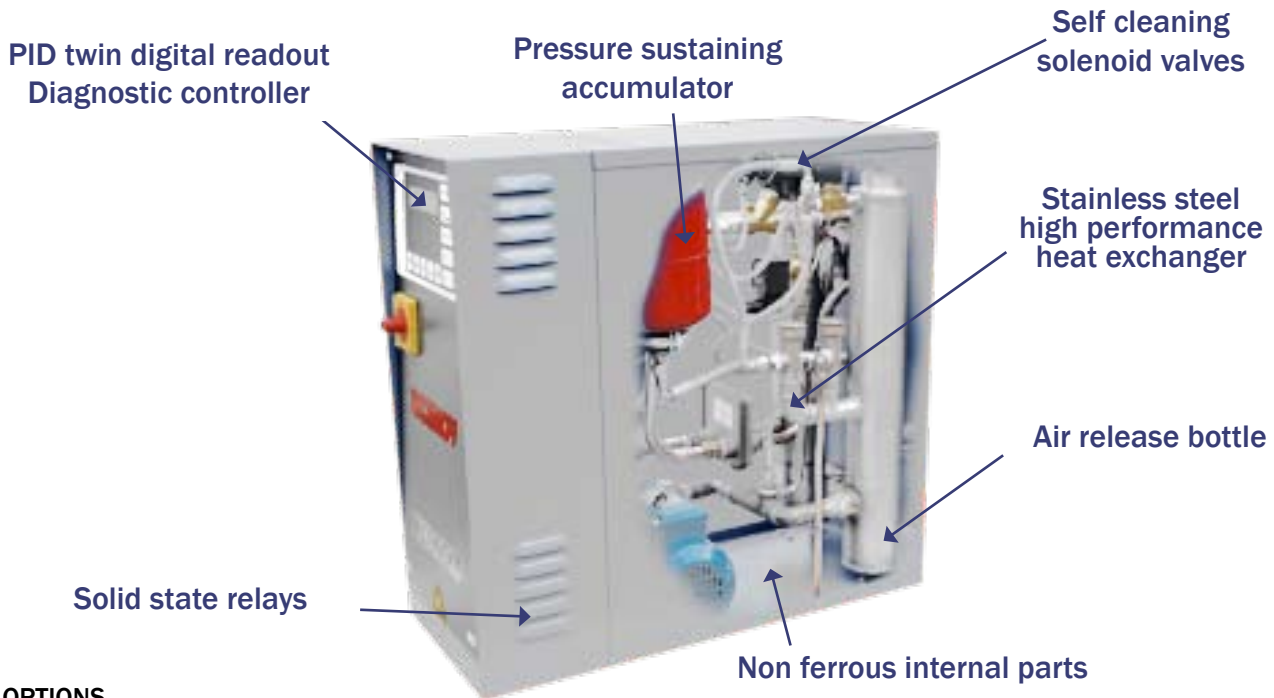
ABOUT THE UNIT

Tricool Thermal's Viceroy Unit is available from 9kW - 96kW heating water up to 140°C, with an extended option up to 160°C.

The unit features an air bottle, stainless steel heat exchanger, pressure sustaining accumulator, non ferrous internal parts, low tank volume and solid state relays. The unit also features an autoshutdown system to prevent any leaks.

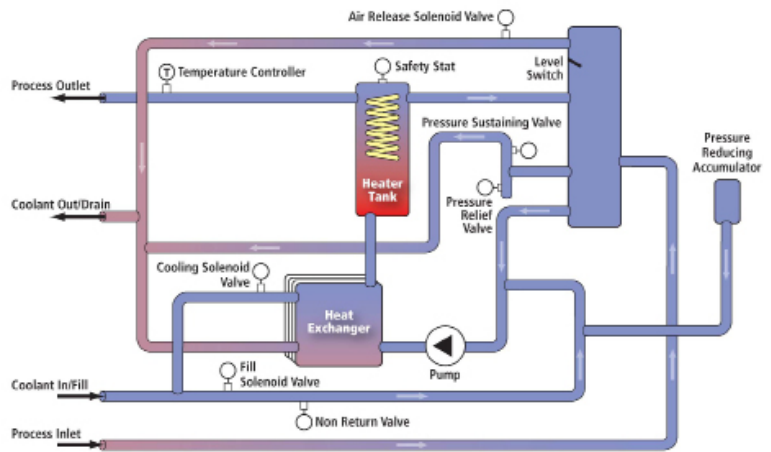
FEATURES

- **LOW VOLUME TANK**
Low volume individual tubular heater tanks, which reduce the liquid volume in circulation, resulting in a reduced power input required for heating
- **DIAGNOSTIC CONTROLLER**
Helps maintenance by showing knowledge of any faults that occur
- **NON FERROUS INTERNAL PARTS**
Keeps system clean, no rust from internal materials of unit
- **CASTORS**
- **STAINLESS STEEL HEAT EXCHANGER**
More efficient with large gaps between plates which reduces the risk of blocking due to contamination
- **DIRECT ACTING SELF CLEANING SOLENOID VALVES**
Low maintenance due to minimal cleaning required (no diaphragm)
- **AUTO SHUTDOWN SYSTEM**
If a pipe breaks the machine will stop and lock the supply water system down to prevent any leaks
- **PRESSURE SUSTAINING ACCUMULATOR**
Reduces the use of pressure relief valves
- **SOLID STATE RELAY**
Energy savings due to pulsing every 0.3 seconds (contactors generally every 16 seconds)
Increased accuracy
No wear and tear due to no moving parts
- **AIR RELEASE BOTTLE**
Protects the heating elements and pump where large amounts of air could be present in the process



OPTIONS

- Direct Cool
- Switchable Remote and Local Sensing
- Process Machines Protocol Interface
- IP55 rated electrical specification
- Stainless Steel Panels
- Controller available with a number of language chips
- Pneumatic Tool Purge
- Various flow/pressure options
- Increased Cooling
- Bespoke machines built to order



UNIT SPECIFICATIONS

Model	V5-9	V5-12	V5-18	V5-24	V5-36	V5-48	V5-54	V5-72	V5-96
Heating kW	9	12	18	24	36	48	54	72	96
Cooling 120°C TD	Standard kW	30	30	70	70	70	100	100	100
	Increased kW	100	100	140	140	140	140	140	140
Max Flow/Pressure LPM@bar	40 /3.8	40 /3.8	70 /4	70 /4	130 /3	130 /3	130 /3	130 /4	220 /3.2
Connections Process	1/2"	1/2"	1"	1"	1 1/4"	1 1/4"	1 1/2"	1 1/2"	1 1/2"
Connections Cooling	1/2"	1/2"	3/4"	3/4"	1"	1"	1"	1"	1"
FLA Amps	18	22	32	40	55	76	89	106	155

with an extended option up to 160°C

Head office South
 +44 (0) 23 8052 7300
London
 +44 (0) 208 200 2404
Midlands
 +44 (0) 121 326 7771

North
 +44 (0) 1274 740877
Scotland
 +44 (0) 1698 723308
Ireland
 +353 (0) 86 38 77990

