

solutions for every process



**Metal working and general engineering**

- Hydraulic presses
- Die casting
- Platens
- Test rigs

**Food industry**

- Confectionery
- Bakeries
- Breweries
- Dairy
- Soft drinks
- Cereals

**Chemical and pharmaceutical**

- Jacketed vessels
- Reactor vessels

**Other industries**

- Printing
- Laminating
- Paint manufacture

Is your process temperature out of control?



**Group Companies**  
**Head Office South**  
 ICS House  
 Stephenson Road  
 Calmore Industrial Estate  
 Totton, Southampton SO40 3RY  
**FREEPHONE** 0800 169 3861  
 T +44 (0)23 8052 7300  
 F +44 (0)23 8042 8366

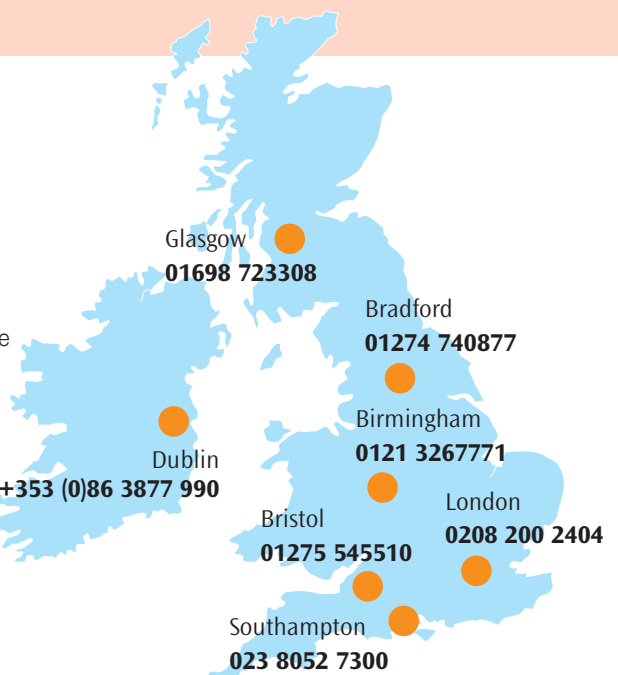
**London**  
 Kingsbury House  
 468 Church Lane Kingsbury  
 London NW9 8UA  
 T +44 (0)208 200 2404  
 F +44 (0)1425 639041

**Midlands**  
 Unit 82, Plume Ind. Estate  
 Holborn Hill  
 Aston, Birmingham B6 7RT  
 T +44 (0)121 326 7771  
 F +44 (0)121 327 4114

**North**  
 Floor 3, Caspian House  
 East Parade  
 Little Germany  
 Bradford BD1 5EP  
 T +44 (0)1274 740877  
 F +44 (0)1274 391708

**Scotland**  
 Unit 5, 53/58 South Avenue  
 Blantyre Industrial Estate  
 Blantyre G72 0XB  
 T +44 (0)1698 723308  
 F +44 (0)1698 723309

**Ireland**  
 Unit 2 Kells Enterprise Centre  
 Cavan Road  
 Kells, County Meath  
 Ireland  
 T +353 86 38 77990  
 F +353 46 90 59883



**Call Tricool Thermal FREE today on 0800 977 5709**

Tricool Thermal water & oil process temperature controllers. 30 years of precision process temperature control.

Tricool Thermal



Temperature control

**Heating & cooling your process temperature**

With over **30 years experience** of manufacturing temperature control equipment here in the UK, we have a proven track record for quality and precision temperature control where you need it most – on your process. We can heat and cool from one unit and can offer equipment from stock or purpose build a unit for you to meet your specific site requirements.

We can also offer you or your clients the following supply and service:

**Water heaters** (3-96kW) offering temperatures up to 95°C and suitable for food production processes, chemical and pharmaceutical, including jacketed vessels.

**Oil heaters** (3-96kW) offering temperatures up to 350°C and suitable for extrusion and die casting.

**Pressurised water heaters** (3-96kW) offering temperatures up to 160°C and suitable for injection moulding.

**Custom built oil skids** (100kW-2mW) offering temperatures up to 350°C.

**Dual heating and cooling** units to help control variable temperature production.

**Rental equipment** – we can offer you a temporary unit to manage breakdowns or short-term R&D trials and non-capital funded projects.

**Installation and service** – we have a nationwide team of engineers providing 24/7 cover.

**Guaranteed quality and precision**

Tricool Thermal have been manufacturing temperature control equipment for over 30 years and we have built our reputation on this. This is supported and controlled by our ISO 9001 accreditation within our production process to exacting CE standards.

Therefore, you can be rest assured that when you buy from Tricool Thermal, you will receive not only a superb product – but the support and credibility of our proven range of equipment.



**Tricool Thermal temperature controllers**

High quality temperature controllers built for precision and reliability to satisfy the increasing demands of today's industrial processes.

A proven 30 year record of design and manufacture to high standards for use in many diverse applications such as:

**Plastic and rubber processing**

- Injection moulding
- Extrusion
- Blow moulding
- Thermo forming
- Cable manufacture
- Calendar rolls (rubber)



# Combi

9-18kW Water up to 95°C Oil up to 150°C



### 1 Diagnostic controller

- Helps maintenance by showing knowledge of any faults that occur

### 2 Solid state relays

- Energy savings due to pulsing every 0.3 seconds (contactors generally every 16 seconds)
- Increased accuracy
- No wear and tear due to no moving parts
- Lower sheath temperature on heating elements (enables 9kW on oil)

### 3 Large volume tank

- More stable temperatures can be achieved

### 4 Direct acting self cleaning solenoid valves

- Low maintenance due to minimal cleaning required (no diaphragm)

### Non ferrous internal parts

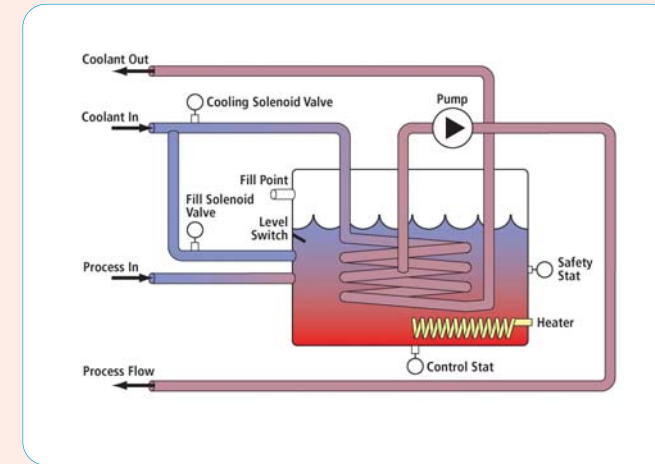
- Keeps system clean, no rust from internal materials of unit

### Castors

- Enables easy manoeuvrability

### Leakstopper as standard

- Standard feature that enables operator to stop minor leaks and carry on production



### Options

- Controller available with a number of language chips
- Tool purge
- Switchable remote and local sensing
- Process machines protocol interface
- IP 55 rated electrical specification
- Stainless steel panels
- Various flow and pressure options
- Bespoke machines made to order

Model	C6 9	C6 12	C5 18
Heating kW	9	12	18
Single Coil 80°C TD	18 kW	18 kW	18 kW
Dual Coil 80°C TD	35 kW	35 kW	35 kW
Max Flow/Pressure IMP/Bar	60/4	60/4	70/6
Designed Flow@Pressure IMP@Bar	30@2	30@2	35@3
Connections Process	1/2"	1/2"	3/4"
Connections Cooling	1/2"	1/2"	1/2"
FLA Amps	18	22	30

# Viceroy

3-96kW Water up to 160°C



### 1 Direct acting self cleaning solenoid valves

- Low maintenance due to minimal cleaning required (no diaphragm)

### 2 Diagnostic controller

- Helps maintenance by showing knowledge of any faults that occur

### 3 Air release bottle

- Protects the heating elements and pump where large amounts of air could be present in the process

### 4 Stainless steel heat exchanger

- More efficient with large gaps between plates which reduces the risk of blocking due to contamination

### 5 Pressure sustaining accumulator

- Reduces the use of pressure relief valves

### 6 Non-ferrous internal parts

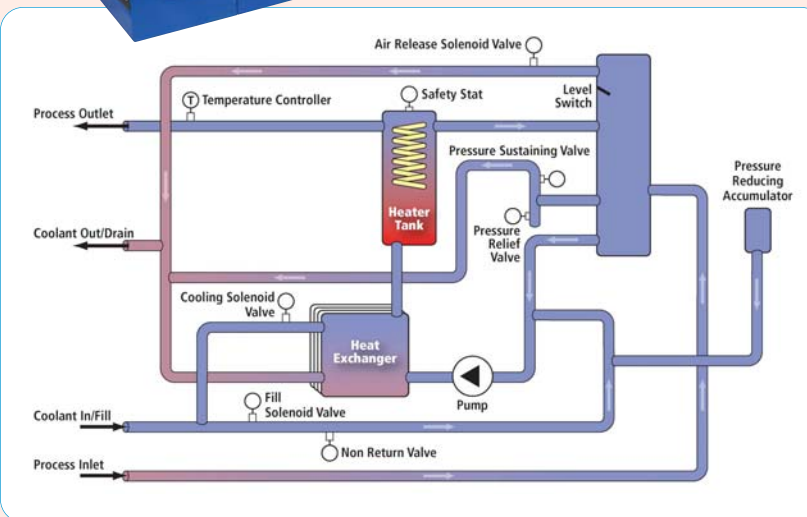
- Keeps system clean, no rust from internal materials of unit

### Castors

- Enables easy manoeuvrability

### Auto shutdown system

- If a pipe breaks the machine will stop and lock the supply water system down to prevent any leaks



### Low volume tank

- Low volume individual tubular heater tanks, which reduce the liquid volume in circulation, resulting in a reduced power input required for heating

### Solid state relays

- Energy savings due to pulsing every 0.3 seconds (contactors generally every 16 seconds)
- Increased accuracy
- No wear and tear due to no moving parts

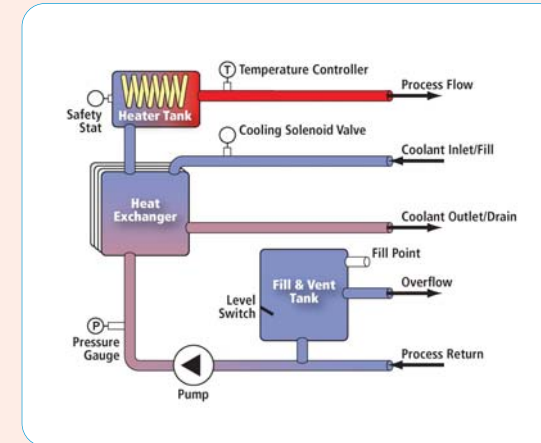
### Options

- Direct cool
- Switchable remote and local sensing
- Process machines protocol interface
- IP55 rated electrical specification
- Stainless steel panels
- Controller available with a number of language chips
- Pneumatic tool purge
- Various flow/pressure options
- Increased cooling
- Bespoke machines built to order

Model	V5-3	V5-6	V5-9	V5-12	V5-18	V5-24	V5-27	V5-36	V5-48	V5-60	V5-72	V5-96
Heating kW	3	6	9	12	18	24	27	36	48	60	72	96
Cooling 120°C TD												
Standard kW	30	30	30	30	70	70	70	70	100	100	100	100
Increased kW	100	100	100	100	140	140	140	140	140	140	140	140
Max Flow/Pressure lpm/bar	40/3.8	40/3.8	40/3.8	40/3.8	130/3	130/3	130/3	130/3	220/3.2	220/3.2	220/3.2	400/2.5
Designed Flow @Pressure lpm@bar	25@2	25@2	25@2	25@2	80@2.5	80@2.5	80@2.5	80@2.5	110@3	140@2.7	160@2.5	220@2.0
Connections Process	1/2"	1/2"	1/2"	1/2"	1 1/4"	1 1/4"	1 1/4"	1 1/4"	1 1/2"	1 1/2"	1 1/2"	2"
Connections Cooling	1/2"	1/2"	1/2"	1/2"	1"	1"	1"	1"	1"	1"	1"	1"
FLA Amps	6	12	18	22	30	40	50	55	75	92	110	144

# Sheik

3-96kW Oil up to 350°C



### Options

- Switchable remote and local sensing
- Process machines protocol interface
- IP55 rated electrical specification
- Stainless steel panels
- Controller available with a number of language chips
- Various flow/pressure options
- Increased cooling
- Bespoke machines built to order



### 1 Stainless steel heat exchanger

- More efficient with large gaps between plates which reduces the risk of blocking due to contamination

### 2 Magnetic drive pump on units over 200°C

- Seal-less, so low maintenance alleviates any leaks

### 3 Non ferrous internal parts

- Keeps system clean, no rust from internal materials of unit

### 4 Direct acting self cleaning solenoid valves

- Low maintenance due to minimal cleaning required (no diaphragm)

### 5 Low volume tank

- Low volume individual tubular heater tanks, which reduce the liquid volume in circulation, resulting in a reduced power input required for heating

### 6 Diagnostic controller

- Helps maintenance by showing knowledge of any faults that occur

### Solid state relays

- Energy savings due to pulsing every 0.3 seconds (contactors generally every 16 seconds)
- Increased accuracy
- No wear and tear due to no moving parts

### Castors

- Enables easy manoeuvrability

Model	Heating kW	Standard kW	Max Flow/Pressure lpm/bar	Designed Flow@Pressure lpm@bar	Connections Process	Connections Cooling	FLA Amps
S6-300/350	6	100	70/6	40@3	1"	1"	14
S9-300/350	9	100	70/6	40@3	1"	1"	20
S12-300/350	12	100	70/6	40@3	1"	1"	24
S18-300/350	18	100	100/6.5	80@3	1 1/4"	1"	37
S24-300/350	24	100	100/6.5	80@3	1 1/4"	1"	48
S36-300/350	36	100	200/7.0	140@3	1 1/2"	1"	65
S48-300/350	48	100	200/7.0	140@3	1 1/2"	1"	84
S60-300/350	60	100	600/3.4	240@3	2"	1"	100
S72-300/350	72	100	600/3.4	280@3	2"	1"	122
S96-300/350	96	100	600/3.5	380@3	2"	1"	158

# Thermoregulators

3-96kW Water up to 95°C



### 1 Stainless steel heat exchanger

- More efficient with large gaps between plates which reduces the risk of blocking due to contamination

### 2 Diagnostic controller

- Helps maintenance by showing knowledge of any faults that occur

### 3 Non ferrous internal parts

- Keeps system clean, no rust from internal materials of unit

### 4 Low volume tank

- Low volume individual tubular heater tanks, which reduce the liquid volume in circulation, resulting in a reduced power input required for heating

### Direct acting self cleaning solenoid valves

- Low maintenance due to minimal cleaning required (no diaphragm)

### Solid state relays

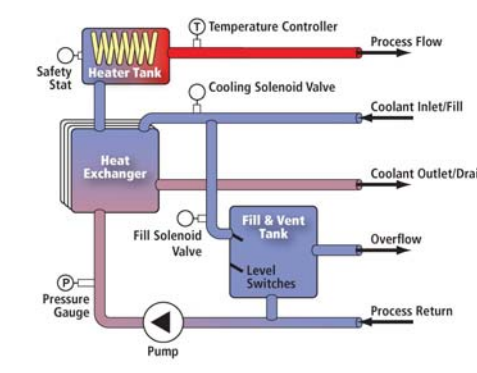
- Energy savings due to pulsing every 0.3 seconds (contactors generally every 16 seconds)
- Increased accuracy
- No wear and tear due to no moving parts

### Castors

- Enables easy manoeuvrability

### Options

- Switchable remote and local sensing
- Process machines protocol interface
- IP55 rated electrical specification
- Stainless steel panels
- Controller available with a number of language chips
- Various flow/pressure options
- Increased cooling
- Bespoke machines built to order



# Bespoke 3kW-2mW temperatures up to 350°C

Tricool are able to offer temperature controllers of every range equipped for specific industry related requirements. Below are some examples of the special options available:

- Ex protected units for the chemical industry.
- Complete units in stainless steel with IP65 controllers as required by the food industry.
- Equipment with highly sensitive temperature control systems employed in electrical engineering and the manufacturing of semi conductors.
- Temperature controllers to customers specifications including special dimensions or structures. These may consist of multi circuit units or equipment requiring separate control cabinets.

Oil skids and gas fired models are also available for units requiring more than 150kW of power.

